



NEW GARAGE DOOR --- **CHECKLIST** ---

EVERY DECISION YOU NEED TO THINK THROUGH WHEN
PURCHASING YOUR NEXT GARAGE DOOR.



WHY DO YOU WANT TO REPLACE YOUR **GARAGE DOOR?**

It is helpful for us to know why you are exploring the possibility of replacing your garage door. This helps to guide you through the appropriate questions, decisions, and options.

Select which option applies to you.

- ☐ Current door is broken (more cost-effective to replace than continue repairing)
- ☐ Remodeling / Adding a fresh new look to my home (current door is outdated)
- ☐ Other: _____

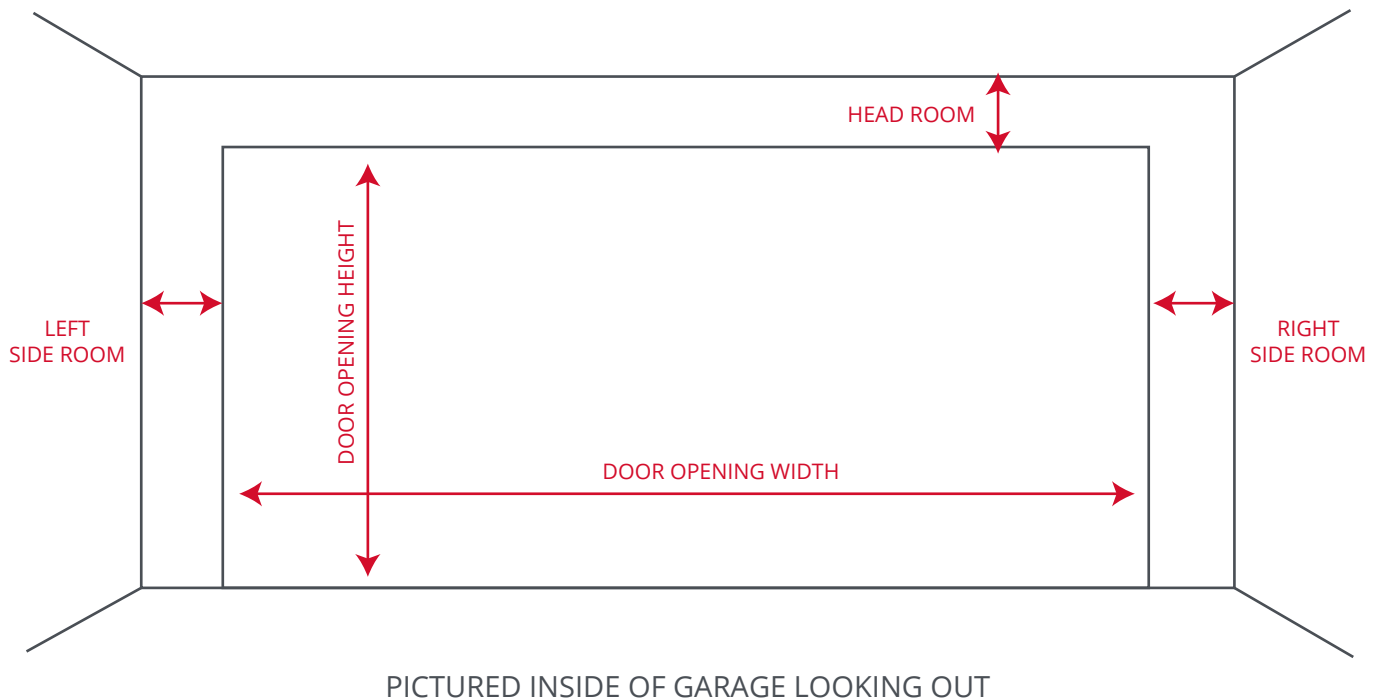
BUDGET: _____

The cost of your garage door will vary depending on your needs, size, and selections. Setting a budget can help narrow your options and design a door you can comfortably afford.

SIZE

While the height and width measurements are important, there are a few additional numbers we need to get you a garage door that fits.

Door Opening Width	_____ FT	_____ INCHES
Door Opening Height	_____ FT	_____ INCHES
Head Room/Head Space	_____ FT	_____ INCHES
Side Room/Side Space – Left Side	_____ FT	_____ INCHES
Side Room/Side Space – Right Side	_____ FT	_____ INCHES



PICK YOUR **COLOR**

Check your preferred color choices.



☐ **BEIGE**



☐ **BLACK**



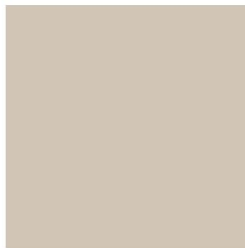
☐ **BROWN**



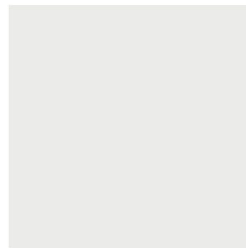
☐ **GRAY**



☐ **GREEN**



☐ **TAN**



☐ **WHITE**



☐ **WOOD GRAIN**

COLOR SELECTION VARIES WITH MODEL

TYPE OF **OPENER**

Choose the system that will operate the opening and closing of your garage door.



Chain Drive - Loudest, most common, and affordable. A metal chain drives the opening and closing of the garage door.



Belt Drive - More quiet, and more expensive. A belt drives the opening and closing of the garage door.

SELECT YOUR **STYLE**

Identify a style that compliments your home.

☐

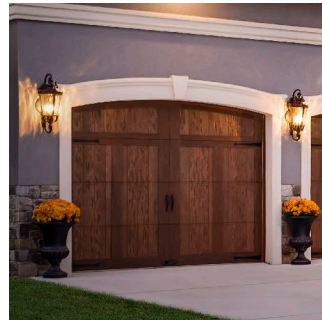
CLASSIC PANEL

☐

CARRIAGE PANEL

☐

WOOD DOORS

☐

FAUX WOOD OVERLAY

☐

FULL-VIEW ALUMINUM

☐

OVERLAY CARRIAGE HOUSE

PANEL OPTIONS

Check your preferred panel choice for your garage door.



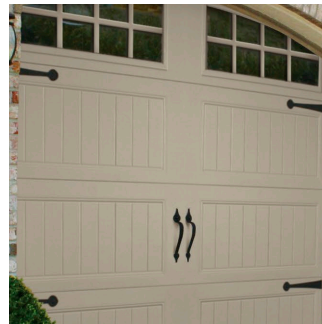
FLUSH PANELS



LONG RAISED PANELS



SHORT RAISED PANELS



CARRIAGE PANELS

MATERIAL OPTIONS

Identify your preferred material type for your garage door. If you have a certain one in mind, ask if achieving the same look with a different material is an option. The majority of doors we sell are steel, for reasons you'll read below. But, we wanted to present you with all of the options.



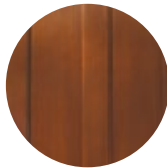
STEEL

This is hands down the most popular choice. Steel garage doors offer the most variety in terms of price and design. These doors are economical, energy efficient, quiet, and durable. Steel garage doors are efficient, and easy to maintain. This material can mirror the look people are hoping to achieve with an aluminum or wood material at a more affordable price.



ALUMINUM

Aluminum garage doors are low-maintenance and durable. They provide a unique look for more contemporary-style homes. With many window options available, controlling the amount of privacy and light is easy. Aluminum doors are sophisticated, sleek, and available in a variety of colors and glass options. It shares many of the same characteristics of steel.



WOOD

Unlock the natural beauty with the classic choice of a wood garage door. Their craftsmanship is hard to resist. Most styles offer stain or paint grade options. Known for their natural strength, this material will withstand bumps and scratches. Wood doors can last a long time with the proper finishing and maintenance.

WINDOW STYLES

Check the window design preference for your garage door.

☐

3 PANEL

☐

4 PANEL

☐

6 PANEL

☐

8 PANEL

☐

COLONIAL

☐

LONG

☐

PLAIN

☐

CATHEDRAL

☐

CASCADE

☐

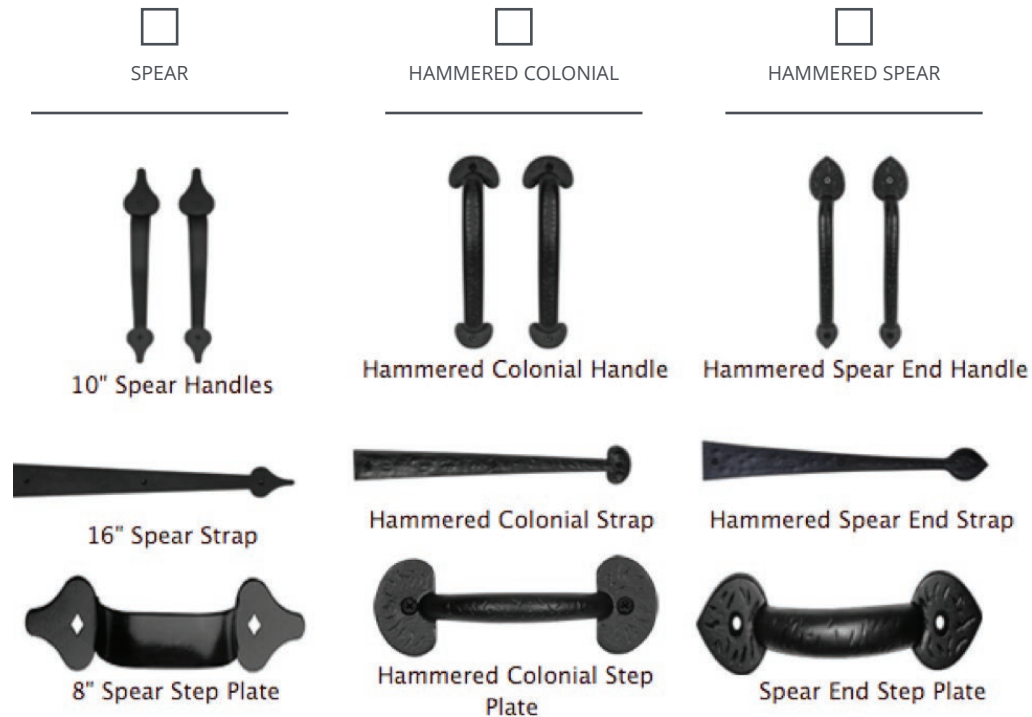
SHERWOOD

☐

SUNBURST



HARDWARE

These small additions can make a big difference in the look and curb appeal of your door. If you're looking to add some flair to the front of your home, consider the following hardware:



INSULATION

Determine which insulation option best fits your needs.

- ☐ Non-insulated (Single-layer)
- ☐ Vinyl Back Insulated (Two-layer) Polystyrene or Polyurethane
- ☐ Steel Back Insulated (Three-layer) Polyurethane
-  ☐ Polystyrene (Shaped to fit the panel sections and glued in place)
-  ☐ Polyurethane Insulation (Foam injected to fill every nook and cranny of the panel section, leaving no insulation voids)

ADD-ON/ACCESSORY OPTIONS

But wait, there's more! There are accessories available to meet your every need. There are technology features to compliment your garage door opener, while keeping convenience in mind. Consider one, several or all of these optional add-on options.



KEYLESS ENTRY

A keypad allows you to control access and program your garage door.



REMOTE CONTROLS

Choose a remote control to fit your lifestyle.



SURGE PROTECTORS

Keep your devices efficient, and safe from lightening.



REMOTE LIGHT CONTROLS

Never come home to a dark house again.



LASER PARKING

Pull your vehicle into your garage with a pre-targeted laser spot. (Tennis ball theory)



GARAGE DOOR MONITOR

This device indicates whether your door is open or closed. Keep this at your bedside and know the door is closed.



SMARTPHONE TECHNOLOGY

Monitor status, receive alerts, and open/close your garage door from anywhere.



CEILING MOUNT

Hides cords and can tuck opener up against the ceiling to free up ceiling space in the garage

YOUR PERFECT GARAGE DOOR **AWAITS**

Now that you've completed this checklist, you're ready to move on to the next step. Once you're ready to begin shopping, you can review this information with a specialist to help guide you toward the selection of garage doors that meet your criteria.

ABOUT **AMERICAN DOOR WORKS**

Our goal is to match your personality and style with a garage door that reflects just that, you. With over four-plus decades of dedication in both solution and service, we're here to help you select the perfect product.

CONTACT A GARAGE DOOR EXPERT



SHARE THIS CHECKLIST

